



Leatherback Sea Turtle  
*Dermochelys coriacea*



Pacific Pond Turtle  
*Actinemys marmorata*



Western Painted Turtle  
*Chrysemys picta bellii*



Red-eared Slider  
*Trachemys scripta elegans*



Northern Alligator Lizard  
*Elgaria coerulea*



Pigmy Short-horned Lizard  
*Phrynosoma douglasii*



Western Skink  
*Eumeces skiltonianus*



European Wall Lizard  
*Podarcis muralis*

Fact:

The species is found on the western coast of the US and Mexico. It was formerly found BC, but is now listed as being extirpated.

Extirpated means extinct in one area of its range.



Fact:

The Leatherback is the world's largest sea turtle and can reach lengths of one to two meters long and can weigh from 250 to 700 kilograms.

It is a rare visitor to BC's coastal waters.



Fact:

The Red-eared Slider is an introduced species, originating from abandoned pets. It is found mostly in the south-western area of the province.



Fact:

The Western Painted Turtle is BC's only native turtle species. It is found throughout southern BC.



Fact:

This lizard was last collected from Osoyoos, BC in 1898. In British Columbia, it is now considered extirpated. This means it is extinct in the BC portion of its historic range.



Fact:

Found across the southern part of BC, the Northern Alligator Lizard is a small lizard that resembles a miniature alligator.



Fact:

This lizard was introduced from Europe and now is very common on lower Vancouver island.

If grabbed by a predator, it will drop its tail to escape.



Fact:

Western skinks occur in south-central BC. Males develop bright orange chins during the breeding season. The young have brighter stripes and a vivid, blue tail; the colours of both fade as the animals age.





Pacific Gopher Snake  
*Pituophis catenifer catenifer*



Great Basin Gopher Snake  
*Pituophis catenifer deserticola*



Desert Nightsnake  
*Hypsiglena torquata*



Western Yellow-bellied Racer  
*Coluber constrictor mormon*



Western Rattlesnake  
*Crotalus oregonus*



Sharp-tailed Snake  
*Contia tenuis*



Rubber Boa  
*Charina bottae*



Western Terrestrial Garter Snake  
*Thamnophis elegans*

Fact:

The species is found on the western coast of the US and Mexico. It was formerly found BC, but is now listed as being extirpated.

Extirpated means extinct in one area of its range.



Fact:

This snake is extirpated from BC. It used to be found in the Georgia Basin. It is quite common further south in California. They often get confused for rattlesnakes because they mimic similar patterns, but are non-venomous.



Fact:

Found in the southern interior of BC, this long, slender snake is nonvenomous.



Fact:

Found in southern interior of BC, the Desert Nightsnake is active in the twilight and at night. It is not dangerous to humans.



Fact:

The Sharp-tailed Snake occurs in southwestern BC, particularly south Vancouver Island and the Gulf Islands. Its main prey is slugs and slug eggs.



Fact:

The Western Rattlesnake is the only venomous snake species found in BC. It is found in the southern interior of the province. It is distinguished the rattle at the end of its tail that it shakes as a warning.



Fact:

Found across southern BC, this snake is very variable in appearance, coming in numerous colours and patterns. They eat a wide variety of small land-based prey as well as fish and other aquatic animals.



Fact:

Found across southern BC, the name "Rubber Boa" is derived from their skin which is often loose and wrinkled. These characteristics give the snakes a rubber-like look and texture.





Northwestern Garter Snake  
*Thamnophis ordinoides*



Common Garter Snake  
*Thamnophis sirtalis*



Rocky Mountain Tailed Frog  
*Ascaphus montanus*



Coastal Tailed Frog  
*Ascaphus truei*



Pacific Treefrog  
*Hyla regilla*



Boreal Chorus Frog  
*Pseudacris maculata*



Red-legged Frog  
*Rana aurora*



American Bullfrog  
*Lithobates catesbeianus*

**Fact:**

Common Garter Snakes are the most widespread and northerly occurring species of garter snake, ranging into northern BC. To escape a predator, garter snakes will secrete a foul-smelling fluid from postanal glands.

**Fact:**

The Northwestern Garter Snake is the smallest garter snake in BC, and is located primarily on southern Vancouver Island and the Lower Mainland. They are viviparous (live bearing), reproducing in the spring.

**Fact:**

The Coastal Tailed Frog and Rocky Mountain Tailed Frog (*Ascaphus montanus*) were formerly considered as single species (*A. truei*), but are now recognized as two species based on genetic and ecological differences.

**Fact:**

In BC, these frogs are only found in the extreme south-east of the province. Tailed frogs are the longest-living frogs in North America, estimated to live 15 years or more.

**Fact:**

Found primarily in the north-east of BC. It is one of the first species of amphibian to emerge in spring. It comes out so early that it is often found while snow and ice are still present.

**Fact:**

The Pacific Treefrog (aka Pacific Chorus Frog) has a repertoire of calls, and can be heard calling year-round (not just breeding season). Their calls are often used as Hollywood movie background frog calls.

**Fact:**

The American bullfrog is an invasive species that will eat almost anything they can, including other frogs, salamanders, young turtles, and garter snakes. This makes American bullfrogs a serious threat to BC's wetland wildlife.

**Fact:**

In BC, it is found throughout Vancouver Island, the Gulf Islands and the Lower Mainland, west of the Coast Mountains. Adult Red-legged Frogs primarily eat invertebrates, while juveniles feed on algae.

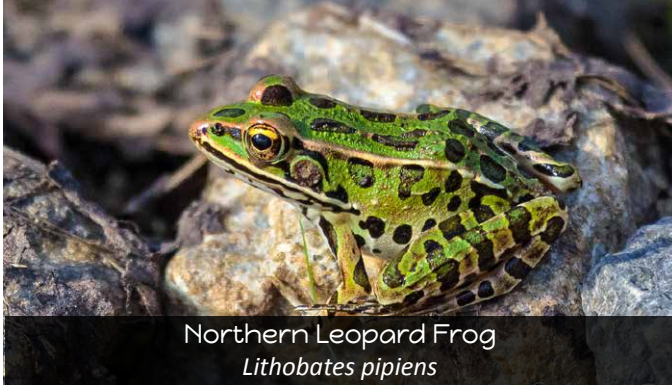




Green Frog  
*Rana clamitans*



Columbia Spotted Frog  
*Rana luteiventris*



Northern Leopard Frog  
*Lithobates pipiens*



Oregon Spotted Frog  
*Rana pretiosa*



Wood Frog  
*Rana sylvatica*



Western Toad  
*Bufo boreas*



Great Basin Spadefoot Toad  
*Spea intermontana*



Northwestern Salamander  
*Ambystoma gracile*

**Fact:**

Found throughout BC, generally away from the coast. It is cold-tolerant, occurring fairly far north, up to the tree line.

**Fact:**

An invasive frog in the lower mainland and Vancouver Island. They may out-compete native frogs for nesting habitat and food. Green frogs are known to displace Oregon spotted frog (*Rana pretiosa*), an endangered species in BC.

**Fact:**

The Oregon Spotted Frog is one of BC rarest amphibians and is found only in the Fraser Valley. Four populations are documented: Mountain Slough, Bertrand Creek, Maria Slough, Morris Valley.

**Fact:**

Northern Leopard Frogs are presently known from only one location in BC, in the Creston Valley. They are most easily noticed during the breeding season, when males are calling.

**Fact:**

Toads have relatively short limbs and rough, warty skin that typically appear as spots on the body. Behind the eyes are prominent parotoid glands, which can exude a toxin as a defensive measure.

**Fact:**

Wood frogs can tolerate the freezing of their blood and other tissues. When frozen, wood frogs have no heartbeat, breathing, blood circulation, muscle movement, or detectable brain activity.

**Fact:**

Found in southwestern BC. It has a glandular ridge running along the top of the tail which contains a noxious, milky secretion to discourage predation.

**Fact:**

Found in BC's dry southern interior. It is well adapted to dry conditions and can survive droughts by burying itself. It has a distinctive "spade" on the inner side of the hind feet which allows it to burrow into loose soil for shelter.





Long-toed Salamander  
*Ambystoma macrodactylum*



Blotched Tiger Salamander  
*Ambystoma mavortium melanostictum*



Coastal Giant Salamander  
*Dicamptodon tenebrosus*



Wandering Salamander  
*Aneides vagrans*



Coeur d'Alene Salamander  
*Plethodon idahoensis*



Western Redback Salamander  
*Plethodon vehiculum*



Ensatina  
*Ensatina eschscholtzii*



Rough-skinned Newt  
*Taricha granulosa*

**Fact:**

This salamander is found in the southern interior of BC. The Tiger Salamander is one of the largest terrestrial salamander in North America. They eat earthworms, insects and other invertebrates. Cannibalism is reported.

**Fact:**

Wide-ranging through BC. In the Pacific Northwest, long-toed salamanders are the earliest breeding amphibians, often migrating across snow and depositing eggs before complete pond are completely free of ice.

**Fact:**

In BC, this salamander is found on Vancouver island. The closest population is northern California. It is thought that they were introduced during the 1800s, included in shipments of oak bark, used in the tanning of leather.

**Fact:**

This species is the largest salamander in Canada. The Coastal Giant Salamander has a very restricted distribution in BC, consisting of the Chilliwack River Valley and nearby tributaries south of the Fraser River

**Fact:**

Reported from southwest corner of the province, including Vancouver Island and the Lower Mainland. They are commonly associated with rocky areas and the edges of streams and seeps.

**Fact:**

Found in south eastern BC. Due to their small population size, the Coeur d'Alene Salamander is threatened by human encroachment into its limited and fragile habitats. As of 1998, fewer than 20 had been found in any location.

**Fact:**

Found along the west coast of BC. When threatened, the Rough-skinned Newt curls upwards, exposing its bright orange belly as a warning to predators of its poisonous skin secretions.

**Fact:**

Found in the southwestern corner of BC. The ensatina is an entirely terrestrial, lungless species of salamander. Eggs are laid in the spring underground or in a rotted log rather than in water.

